

HEATSCOPE®

Outdoor Heating



MADE IN GERMANY

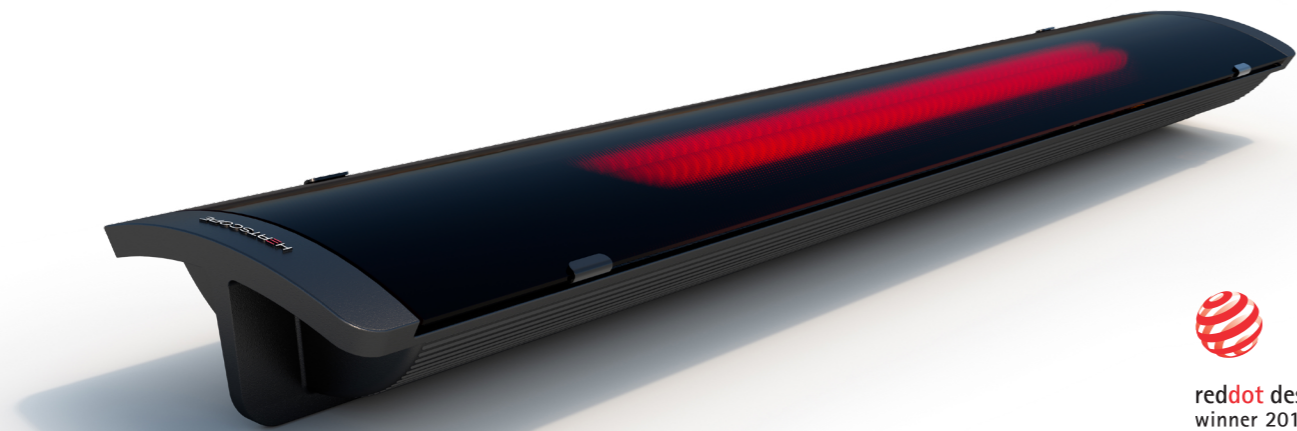
About HEATSCOPE® Heaters



HEATSCOPE® is a world leader in energy efficient electric radiant heaters, a well known brand that is recognised by its superior performance, style, and reliability.

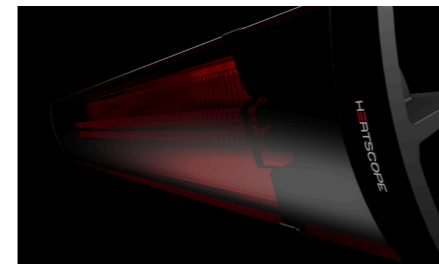
HEATSCOPE® Heaters are manufactured in Germany with meticulous attention to detail including infrared technology. The result is a world class appliance that delivers maximum instant heat with minimum light for outdoor and indoor spaces using individual controlled carbon elements.

With a collection of wall and ceiling mounted heaters designed for the modern home, you will experience a smart heating appliance that is easy to operate, functional, efficient, and discreet. HEATSCOPE®'s superior design, performance and quality is the assurance you are purchasing an electric heater that is trusted internationally for supplying simply the best.

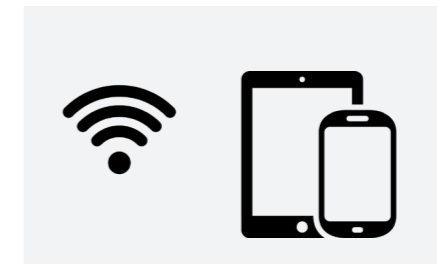


reddot design award
winner 2018

Designed by Bjorn Blisse and the recipient of a highly regarded Red Dot Award, the elegant, slimline HEATSCOPE® Pure delivers a stunning design aesthetic coupled with German precision engineering.



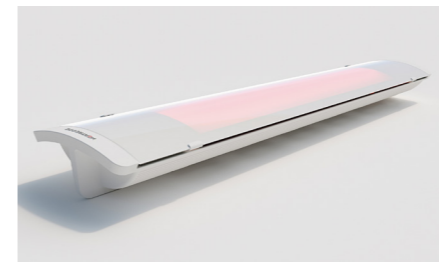
Smart appliance, energy efficient



Connects easily to Smartphone and home automation systems (WiFi version)



Fast heat, infrared radiant technology



Elegant slim-line design



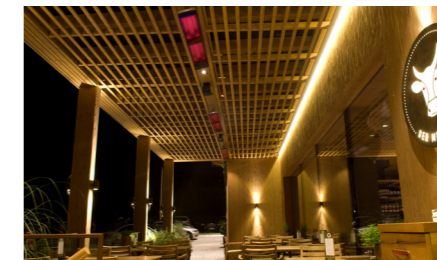
Mounting parts included



Dual Carbon Elements for superior performance



Cast aluminium body, weather resistant



Ceiling and wall mounting options



Instant heat and silent operation



Ultra durable construction, commercial grade quality



Available in All-White or All-Black finish



2 year warranty on residential and commercial

Spot 2800W

Power Heater



Features & Benefits

Lightweight

The smallest and lightest model in our collection.

L 884 x W 184 x H 78 mm. Weight 5kg.

Fast Heat, Infrared Radiant Technology

Reaches full heat within 15 seconds. Works with fast medium waves for quicker heat.

Comfortable Heat

30-40% less light output of other traditional radiant heaters.

IP24

Designed for well covered areas or with optional weather shield.

Global Compliance

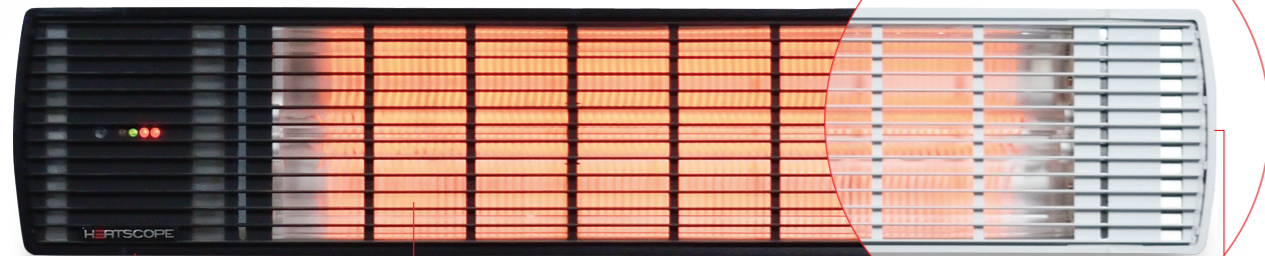
MET Listed to UL Standards, and complies with ACCC in Australia.

Two Mounting Brackets

Adjust the angle of the heater to accurately alter heat coverage for maximum comfort. Extension rods available.

Colour

Available in black or white powder coat finish with colour matching grill screen.



High Quality

Aluminum chassis makes this heater tarnish-free and easy to maintain.

Heat Regulation

Fitted with 2 carbon heating elements. It can be set to 50% or 100% power for a low and high heat setting.

On/Off Buttons

ON/OFF switch and power cable are located on the side of the appliance. Black models have black switches, white models have white switches.



Application



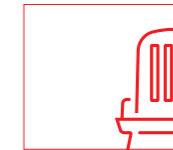
Enclosed Areas



Wind Protected Areas



Semi-enclosed Areas

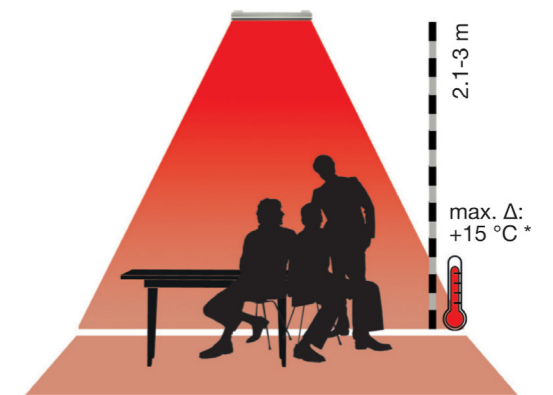


Open Areas (with Weathershield)

Coverage Area

Spot 2800W will heat an area of 3.2m x 2.5m (8m²) when the unit is installed between 2.1m - 3m from the ground. It can increase the room temperature by approximately 15 degrees.

Values are approximate. Maximum temperature increase was measured indoors with room temperature at 16°C and heaters mounted in the ceiling at 2.4m height. The heating area and heat intensity can vary based on the mounting height and location (indoor x outdoor).



3.2 x 2.5 m



Pure+ 3000W

Designer Heater



Features & Benefits

Unique Design

A slimline heater with contemporary look like no other.

L 1044 x W 166 x H 87 mm
Weight 7.5kg

Fast Heat, Infrared Radiant Technology

Very powerful, reaches full heat within 30 seconds (with Glass Screen) or 20 seconds (with Grill Screen). Works with middle-ranged wavelengths for a very pleasant warmth and minimal light.

Front Screen Choice:

1. Glass Ceramic Screen

This rounded front spreads heat evenly across a wider coverage area while minimizing light emission. With an **IP65 rating**, designed for all-weather conditions of wind (dust) and rain. That means it doesn't need a protective shield or any additional protection from the elements.



2. Grill Screen

2. Grill Screen

The use of a grill screen improves the heat intensity if this is desired, however the heater must be installed undercover (not exposed to weather) as the IP reduces from 65 to 25.

Global Compliance

TUV Listed to UL Standards, and complies with ACCC in Australia.

Single Mounting Bracket

Adjust the angle of the heater to accurately alter heat coverage for maximum comfort.

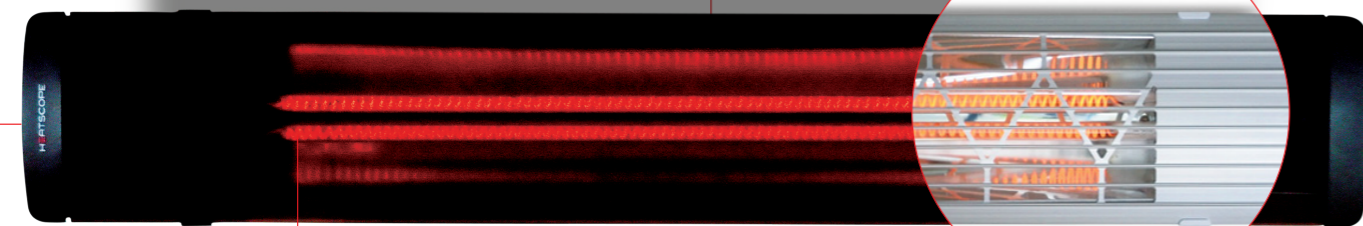
The single bracket allows your heater to be installed in a vertical or horizontal position. You can easily adjust the angle via the swivel joint mount to accurately alter heat coverage for maximum comfort.

Colour

Available in black or white powder coat finish with colour matching glass or grill screen.



reddot design award
winner 2018



High Quality

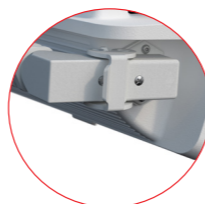
Aluminum chassis makes this heater tarnish-free and easy to maintain.

Heat Regulation

Fitted with 2 carton heating elements. It can be set to 50% or 100% power for a low and high heat setting.

Cable Latch

Pure+ model has a cable latch for ease of installation.



Application



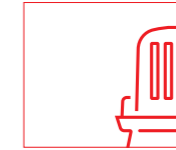
Enclosed Areas



Wind Protected Areas



Semi-enclosed Areas

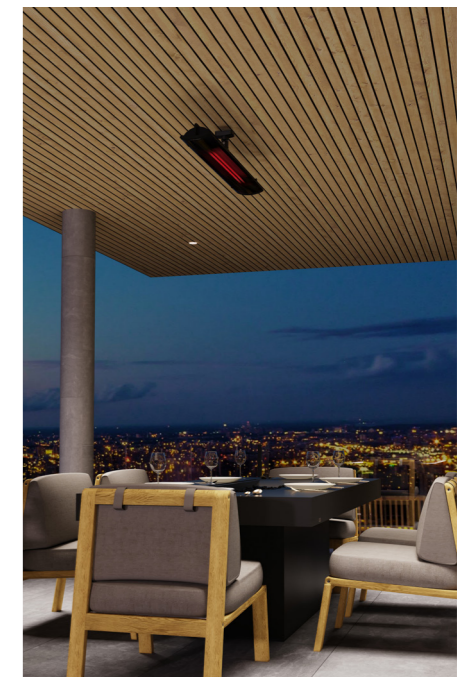
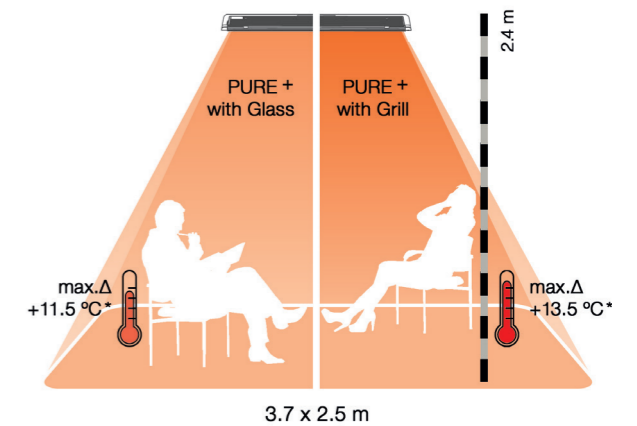


Open Areas*
*With Glass Screen

Coverage Area

Pure+ 3000W will heat an area of 3.7m x 2.5m (9.3m²) [12.1ft x 8.2ft] when the unit is mounted 2.4m [8ft] from the ground. Using the Glass Screen can increase the room temperature by approximately 11.5 degrees, or 13.5 degrees using the Grill Screen.

*Max. temperature increase reachable after 35 minutes in closed rooms with 16.0°C ambient temperature without wind. 85-90% of performance will be reached after max. 7-10 minutes, 100% after max. 35 minutes. Approx. values based on ceiling mounted installation. Recommended mounting height: 1.80m up to max. 2.50m (depending on particular installation situation).



Vision 3200W

Ambience Heater



Features & Benefits

Longest Model

L 1660 x W 184 x D 87 mm.
Weight 11kg.

Top of the Range

A low profile heater with minimalist modern design for luxury ambients.

Fast Heat, Infrared Radiant Technology

Reaches full heat within 30-60 seconds.
Works with mid-range wavelengths for a very pleasant warmth and with minimal light.

Comfortable Heat

Fitted with a flat glass ceramic screen to minimize light emission.

IP44

Protected against wind and splash water - making it a great choice in both indoor and outdoor environments. Optional weather shield is available.

Global Compliance

MET Listed to UL Standards, and complies with ACCC in Australia.

Two Mounting Brackets

Adjust the angle of the heater to accurately alter heat coverage for maximum comfort. Extension rods available.

Colour

Available in black or white powder coat finish with colour matching glass screen.



High Quality

Aluminum chassis makes this heater tarnish-free and easy to maintain.

Heat Regulation

Fitted with 2 carbon heating elements. It can be set to 50% or 100% power for a low and high heat setting.

On/Off Buttons

ON/OFF switch and power cable are located on the side of the appliance. Black models have black switches, white models have white switches.



Application



Enclosed Areas



Wind Protected Areas



Semi-enclosed Areas

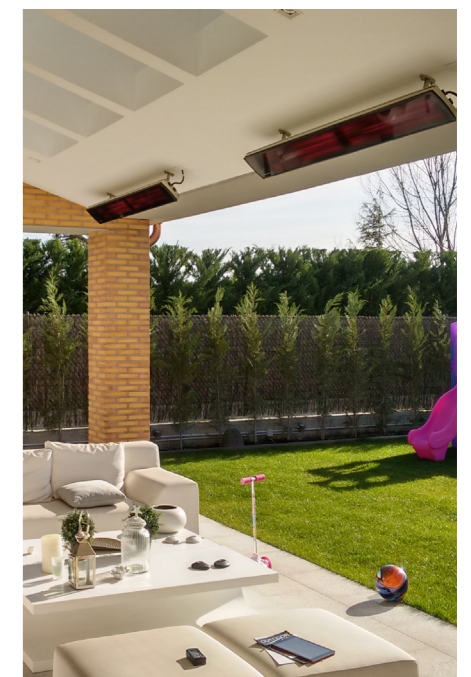
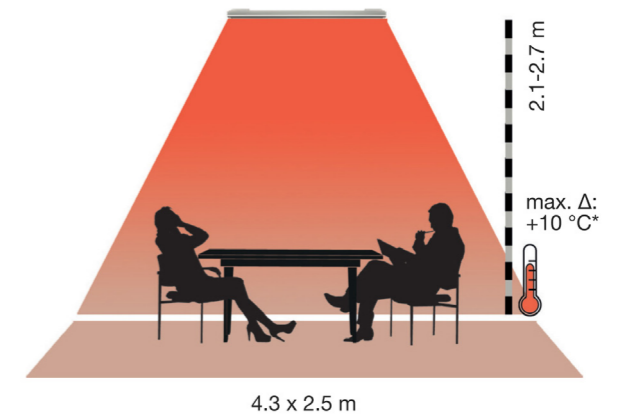


Open Areas (with Weathershield)

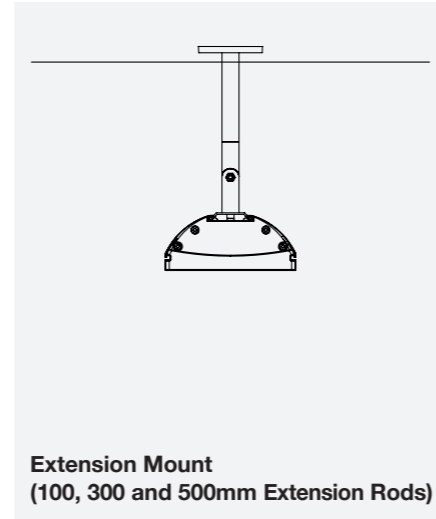
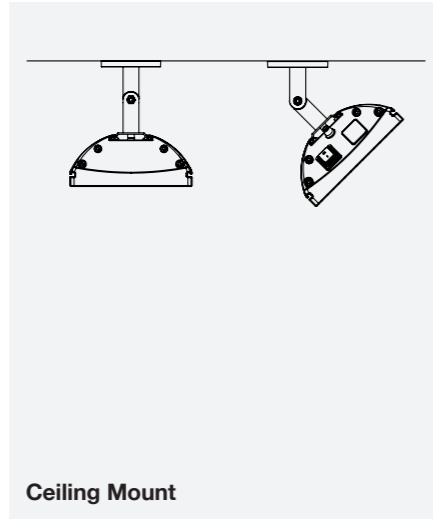
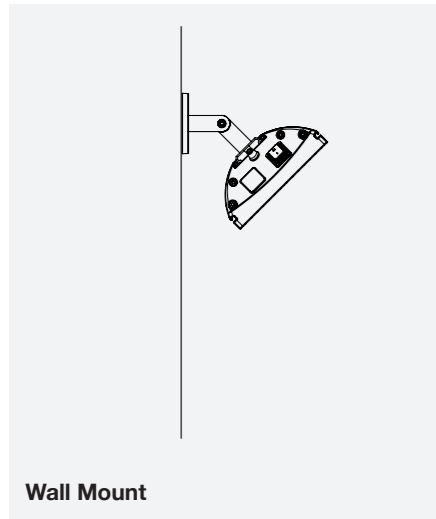
Coverage Area

Vision 3200W will heat an area of 4.3m x 2.5m (10.75m²) when the unit is installed between 2.1m - 2.7m from the ground. It can increase the room temperature by approximately 10 degrees.

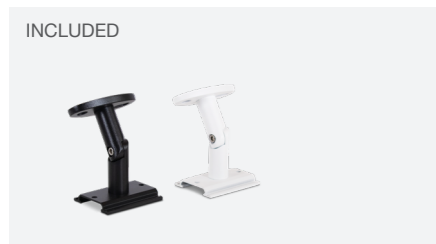
Values are approximate. Maximum temperature increase was measured indoors with room temperature at 16°C and heaters mounted in the ceiling at 2.4m height. The heating area and heat intensity can vary based on the mounting height and location (indoor x outdoor).



Mounting Options



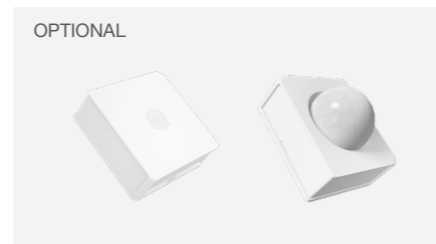
Accessories



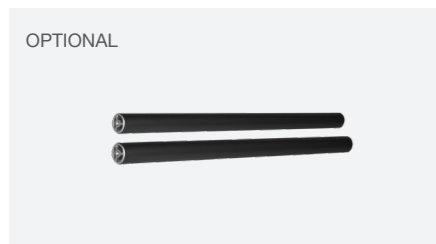
Mounting Parts
Your heater comes with everything you need for a wall or ceiling mounted installation. Available in black or white.



Dual WiFi Smart Switch (w/ App)
Operate and sync your heater(s) to a smart device with the Dual WiFi Smart Switch. Internet connection is required. (Compatible with 2.4GHz band only.)



ZigBee Wireless Switch (Remote Control) & ZigBee Motion Sensor
The ZigBee Wireless Switch and ZigBee Motion Sensor provide excellent range and will work anywhere in your home that WiFi is available. Dual WiFi Smart Switch and internet connection is required. (Compatible with 2.4GHz band only.)



Extension Rods
Extend the reach of your HEATSCOPE® heaters on high ceiling installations with 100, 300 or 500mm Extension Rods. Available in black or white.



Weathershield*
The HEATSCOPE® Weathershield is designed to protect your heater from the elements in installations where no covering is possible. Available in black or white.
*Available for Spot & Vision models only.

Which HEATSCOPE® heater is the best for you?



Direct radiated heat warms everything it touches, bringing a lasting, comfortable heat to your home whilst consuming less energy.

When choosing your HEATSCOPE® Heater, it is important to consider the following aspects:

- Location (indoor or outdoor)
- Design you would like to achieve
- Access to electricity supply
- Size of space to be heated
- Environment conditions (wind, weather)
- Clearances
- Intended position to install the appliance
- Proximity to water

Radiant heating is the foundation for all HEATSCOPE® Heaters, and when correctly specified, they can heat an area effectively.

HEATSCOPE® Heaters	 Spot 2800W	 Pure+ 3000W	 Vision 3200W
--------------------	--	---	--




Application

Covered & open/ semi-closed spaces Areas covered with a roof or canopy & at least one closed side.	✓	✓	✓
Uncovered spaces All outdoor and indoor spaces - no cover required.	✓ <small>*with weathershield</small>	✓ <small>*with Glass Screen</small>	✓ <small>*with weathershield</small>

Coverage Size

Select the model that best fits the heated coverage area desired.

The coverage areas shown are based on a ceiling installation in a closed area. This may vary based on mounting height and the type of installation and application.

		
3.2 x 2.5m	3.7 x 2.5m	4.3 x 2.5m

Colour Options

Black	✓	✓	✓
White	✓	✓	✓

Included Accessories

Mounting Parts	✓	✓	✓
Grill Screen		✓	

Optional Accessories

Dual WiFi Smart Switch (w/ App)	✓	✓	✓
ZigBee Wireless Switch (Remote Control) & ZigBee Motion Sensor	✓	✓	✓
Extension Rods	✓	✓	✓
Weathershield	✓	Not Required	✓



Beautifully warm

Electric infrared radiant heating is practical, functional, efficient, and eco-friendly. If you're looking for a discreet heating solution that can be used both indoors and outdoors, in large open spaces or under covered areas, then look no further. Heatscope's space-saving, sleek designs are ideal for homes, restaurants, cafes, or wherever an effective, unobtrusive heating solution is needed.

MAD Design Australia Pty Ltd

T 02 9997 3050

heatscopeheaters.com

HEATSCOPE®

Must only be installed by a licensed technician. HEATSCOPE® is not liable for damages sustained through the use of materials not fire rated. Refer to material specifications for heat tolerances. Installation must be performed in accordance to local standards and jurisdictional requirements. HEATSCOPE® takes no responsibility for incorrect or non-compliant installations. MHS Munich® Home Systems GmbH 2018ff. All product specifications and data are subject to change without notice and believed to be correct at the time of printing. HTS.AU.SUM.BR.2404